

Blogs

- Use links, check if they work!
- Use images and other media
- Mind grammar/syntax
- Mind the text walls
- Use (and keep on using) Categories for your group
 - Tags can be used to keyword content
- Read and comment on other people's work (start with your group)
- No user account for the website? Let us know!



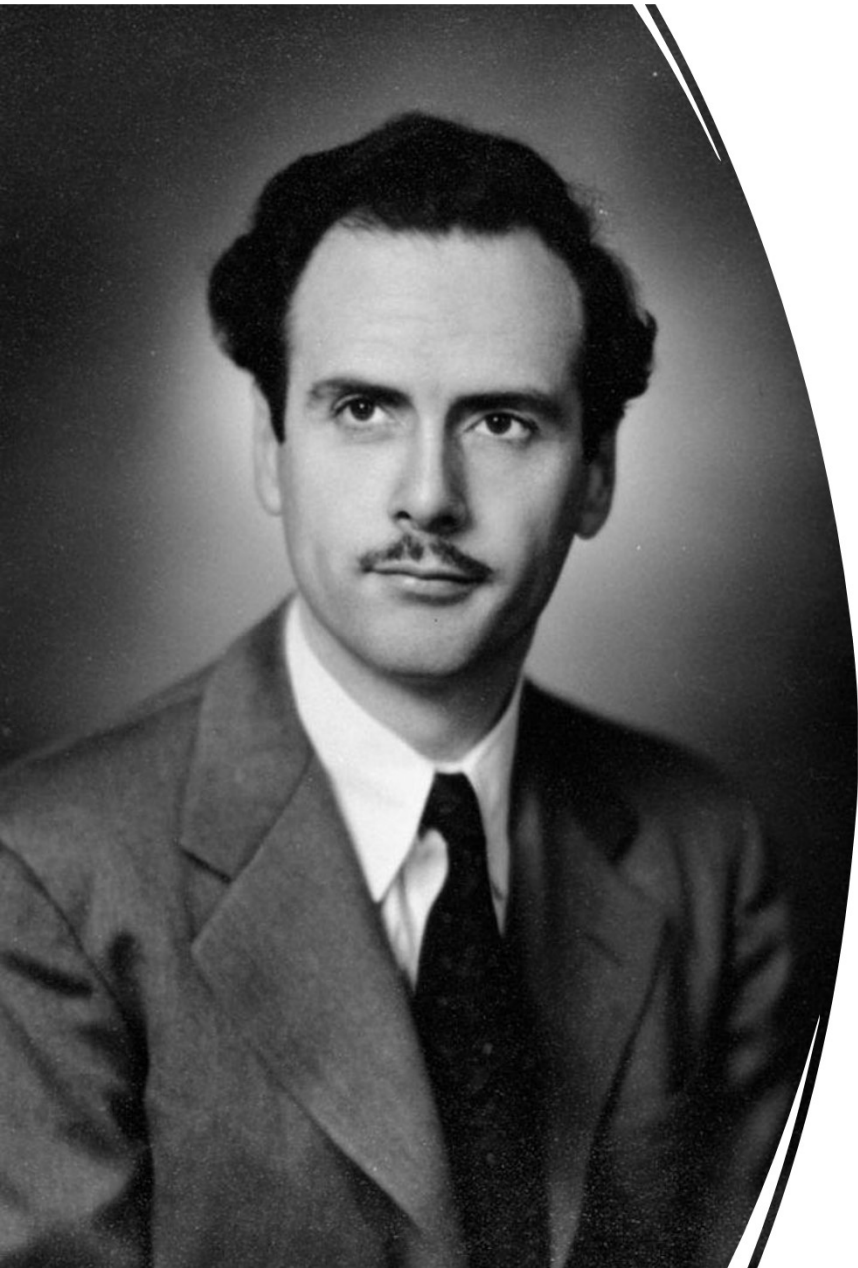
Good job!

Digital Media, Society, and Culture

Angus A. A. Mol

01001000 01100101 01101100 01101100 01101111
00100000 01010111 01101111 01110010 01101100

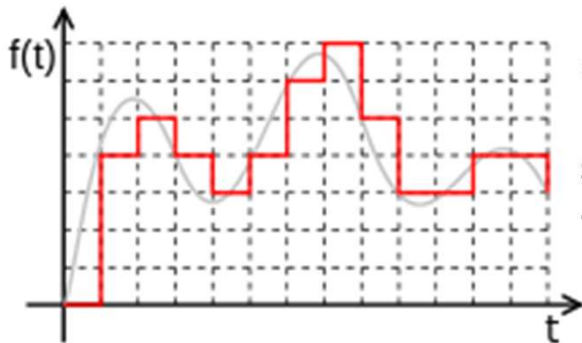




“The Medium is the Message”

Marshall McLuhan
(1964, *Understanding Media*)

The Digital at its most basic



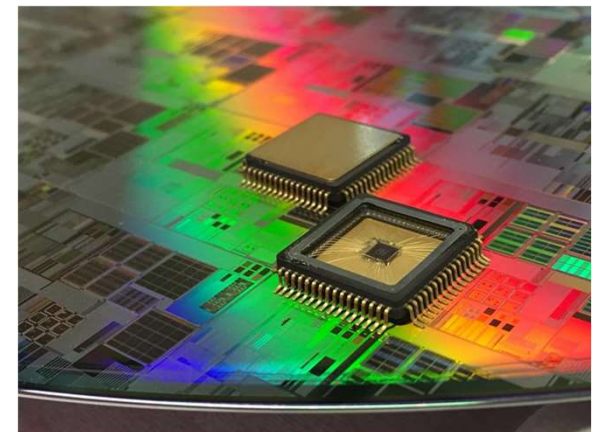
(of signals or data) expressed as series of the digits 0 and 1, typically represented by values of a physical quantity such as voltage or magnetic polarization.

~OED

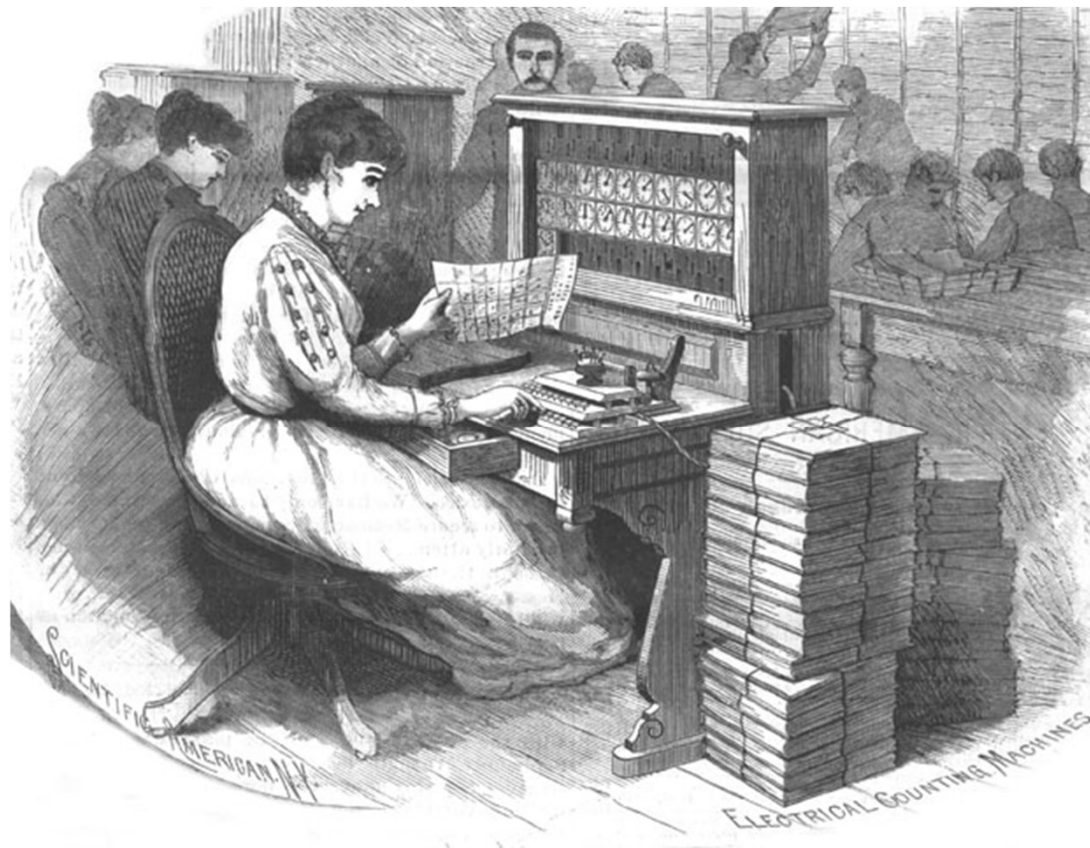
01010111 01100101 01101100 01100011 01101111 01101101 01100101
00100000 01100010 01100001 01100011 01101011 00100000 01110100
01101111 00100000 01100011 01101100 01100001 01110011 01110011

} “WELCOME BACK TO CLASS” in binary code

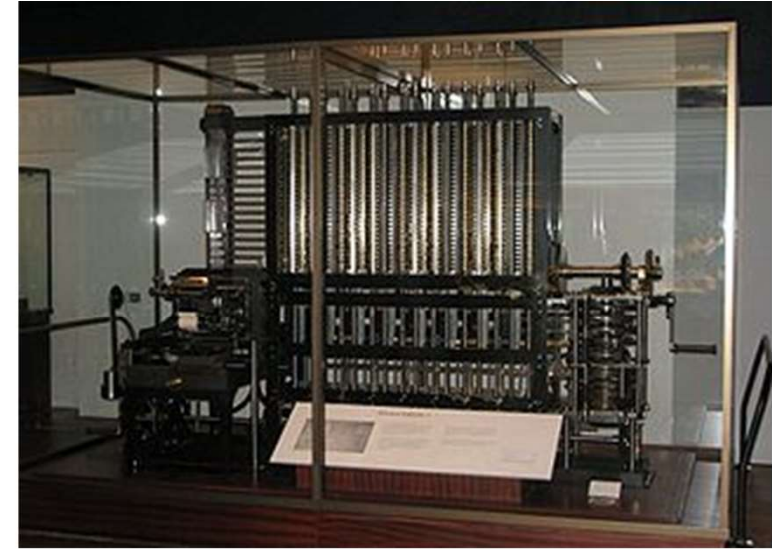
A computer is a set of integrated circuits of transistors (“microchip”) through which electricity flows in on/off patterns.



The First Computers



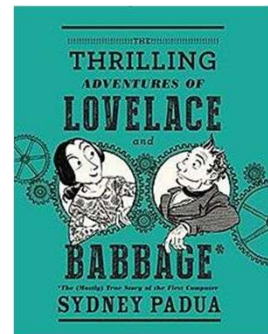
Babbage's Analytical Engine and Lady Lovelace



Working model in London's Museum of Science



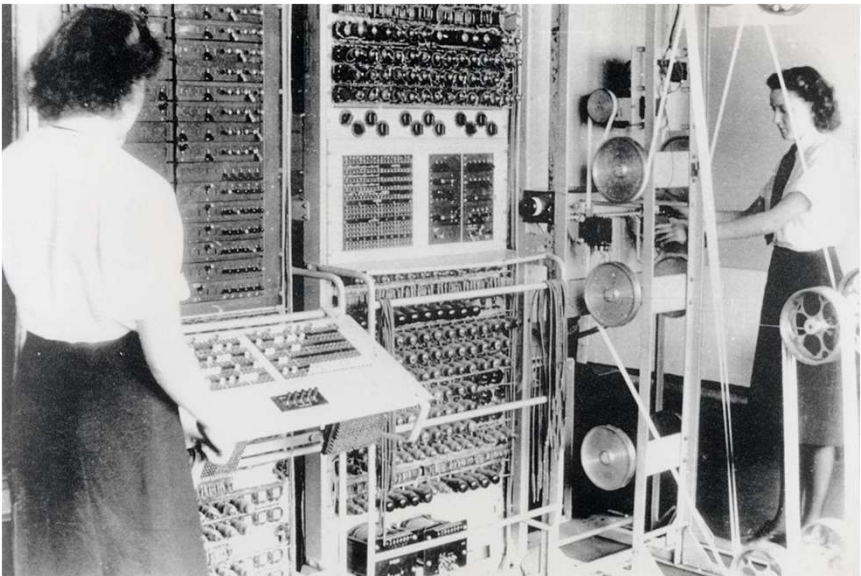
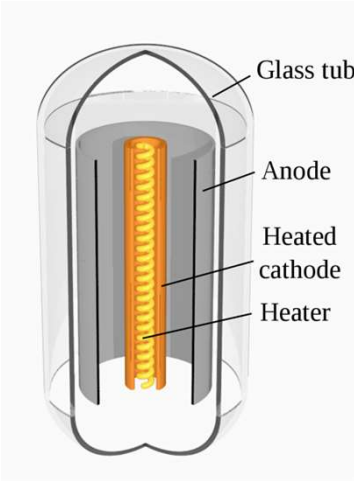
So it was that in 1843, Ada Lovelace wrote the first paper on computer science, including the earliest complete computer program...



War Machines



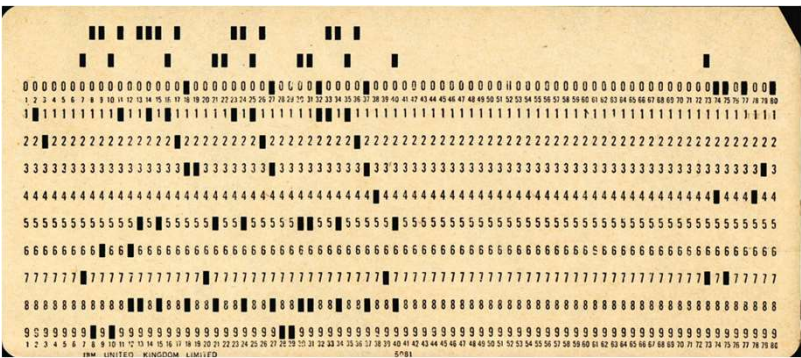
IBM 701 (1952):
ordered by the NSA



First Electronic Computer: *Colossus codebreaker* (1944)



Vacuum tubes from the ENIAC computer

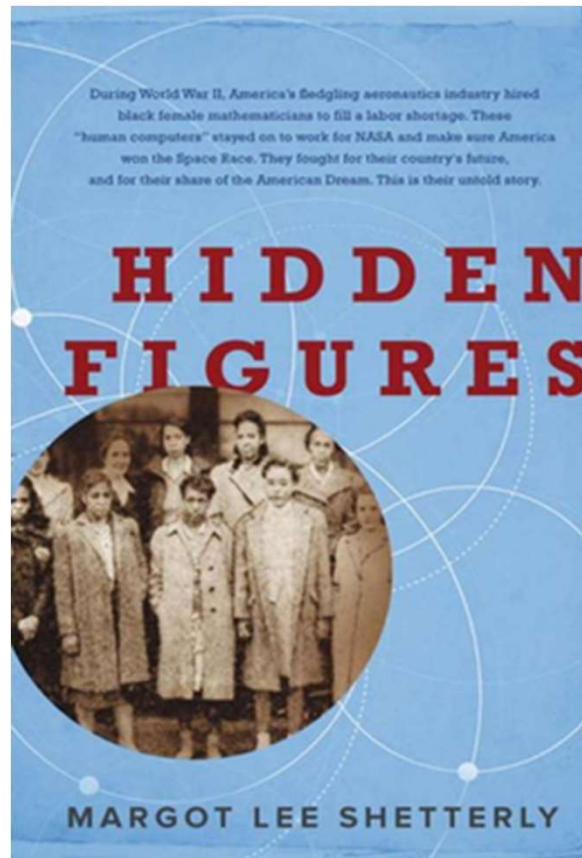


Hollerith-kaart/punch card

Computers: The Hidden Figures of the Space Race



Katherine Johnson working as a computer at NASA in 1966



The 'First' Computer Scholar



Father Roberto Busa (in 2006)



Thomas Watson (founder of IBM)

What is the metaphysics of presence in St. Thomas Aquinas? praesentia, praesens + proposition

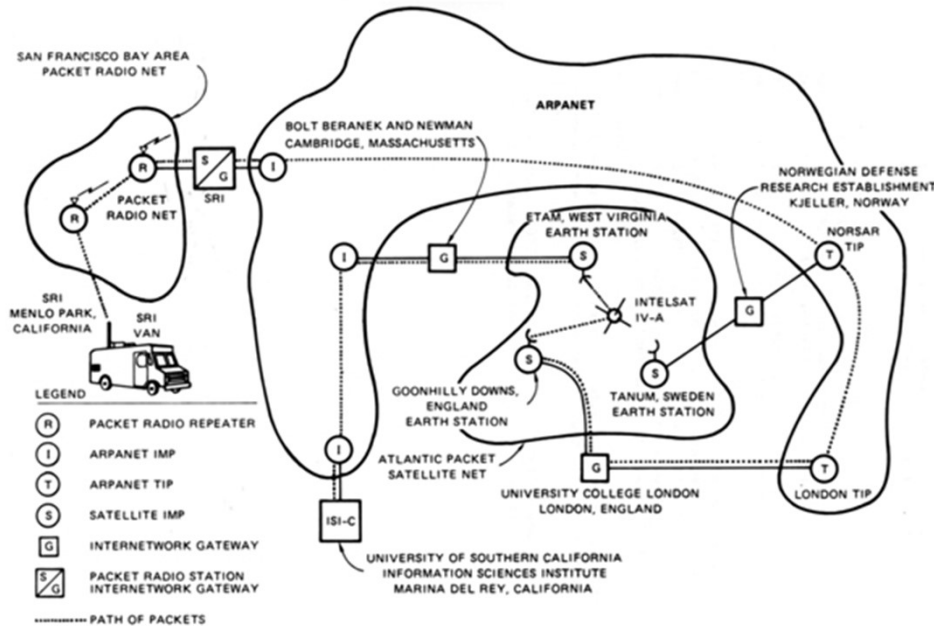
“I knew, the day I was to meet Thomas J. Watson, Sr., that he had on his desk a report which said IBM machines could never do what I wanted. I had seen in the waiting room a small poster imprinted with the words: ‘The difficult we do right away; the impossible takes a little longer.’ ”

- Roberto Busa, 1980

From ARPANet to World Wide Web



Tim-Berners Lee, inventor of the WWW

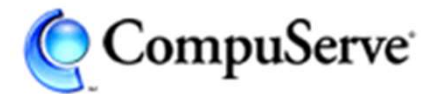


Log of first ARPANet message

29 Oct 67	2100	LOADED CP. PROGRAM (SK)
		FOR BEN BARKER
		BBV
22:30		Talked to SRI (SK)
		Host to Host
		Lefttop imp program (SK)
		running after sending
		a host dead message
		to imp.



'Fathers of the internet'
Vint Cerf & Bob Kahn



Aol.

hobbynet

EUnet

SURF NET

80s/90s: The Digital Revolution



Bill Gates

Steve Jobs



Graphical User Interface (GUI)
+ Office Software



Personal computing
Apple Macintosh



The Post-Digital Age (2010s): Entanglement of the Analog and the Digital



Commander in Tweet



Pokémon Go



Smartphone
“Condom”



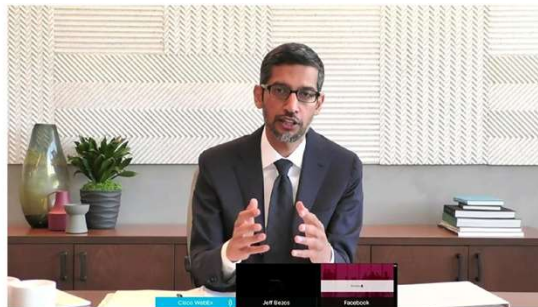
Facebook as Political Power



“Data is the new oil”



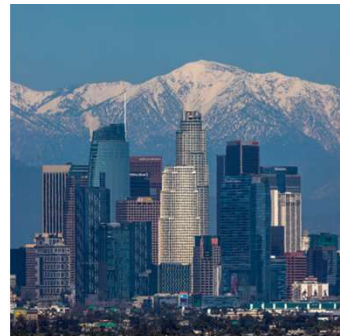
.... and *that* was in
the 'before times'!



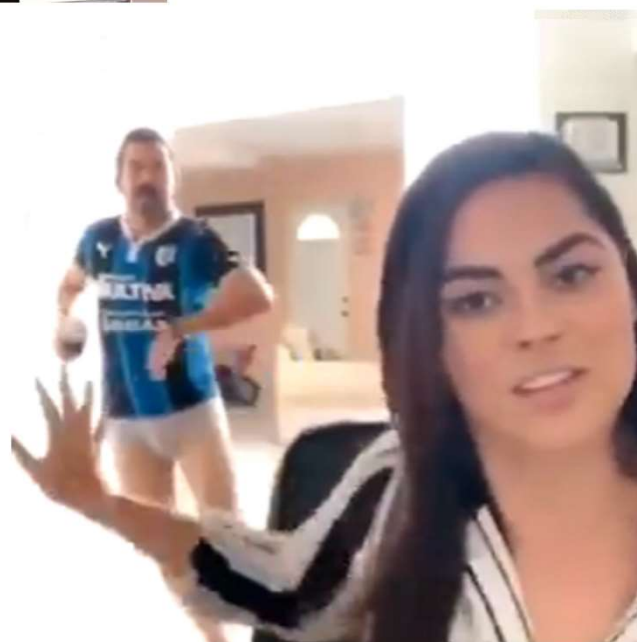
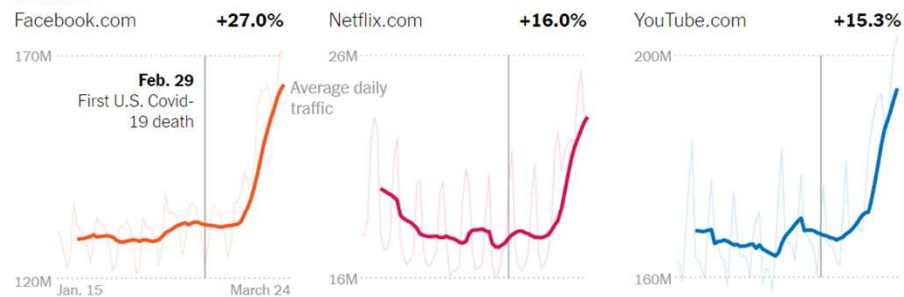
Elon Musk
@elonmusk

Tesla is restarting production today against Alameda County rules. I will be on the line with everyone else. If anyone is arrested, I ask that it only be me.

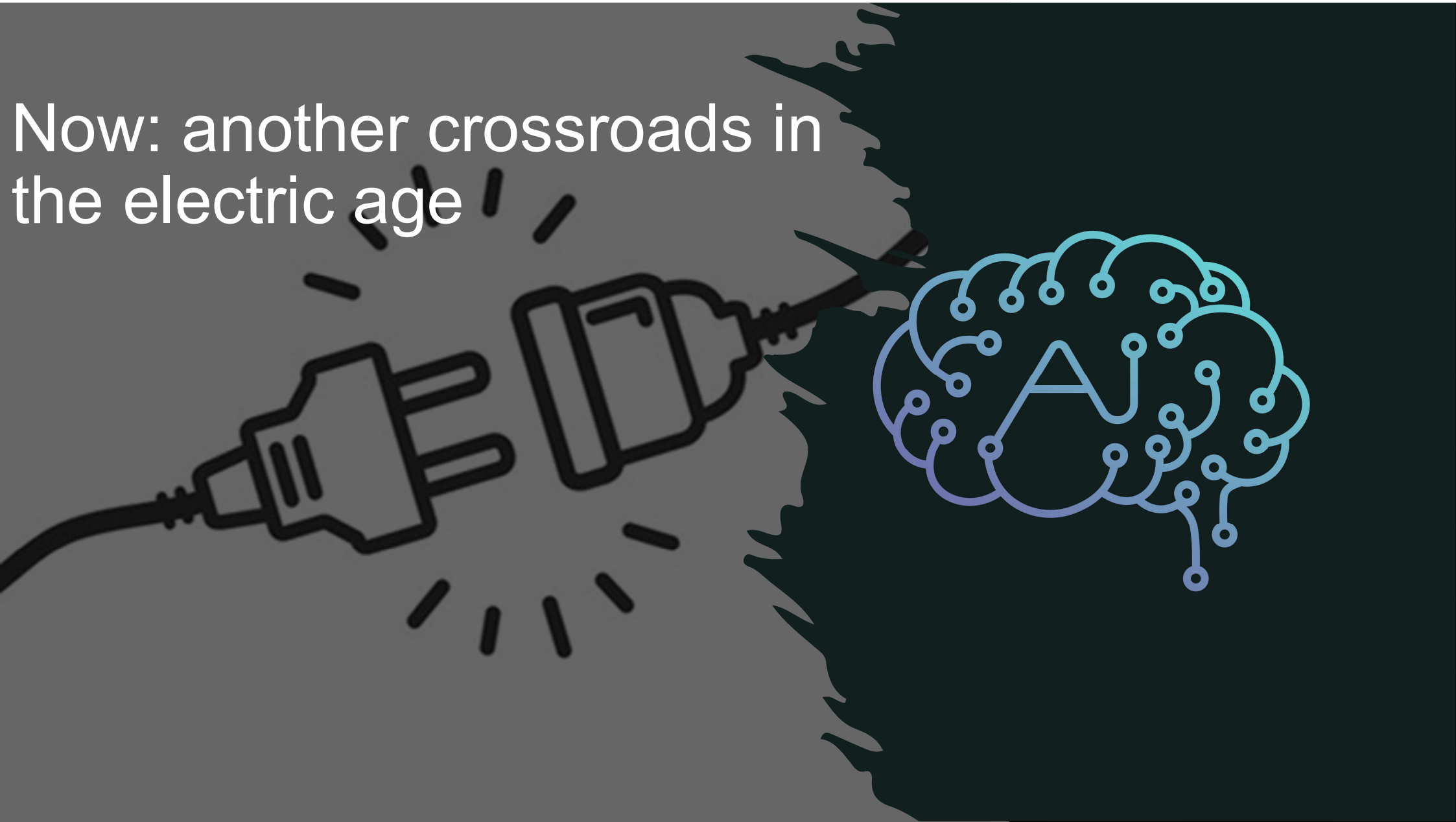
1:36 PM · May 11, 2020 · Twitter for iPhone



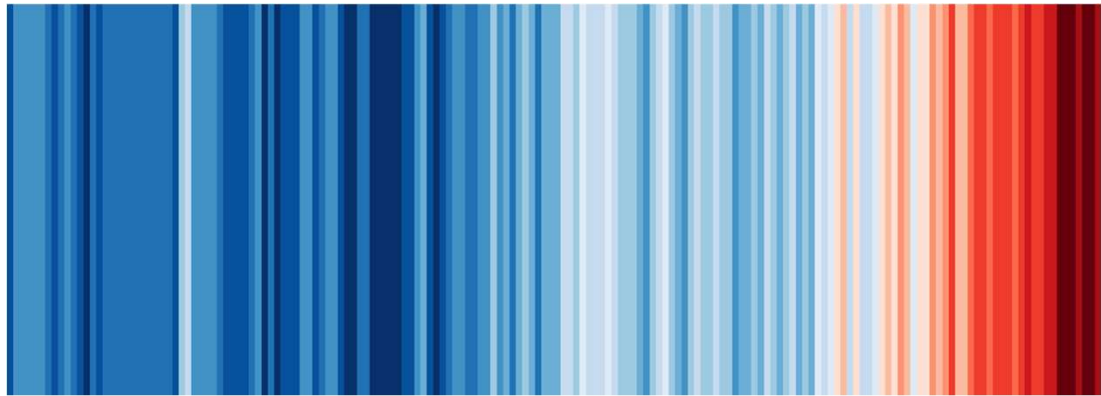
Websites



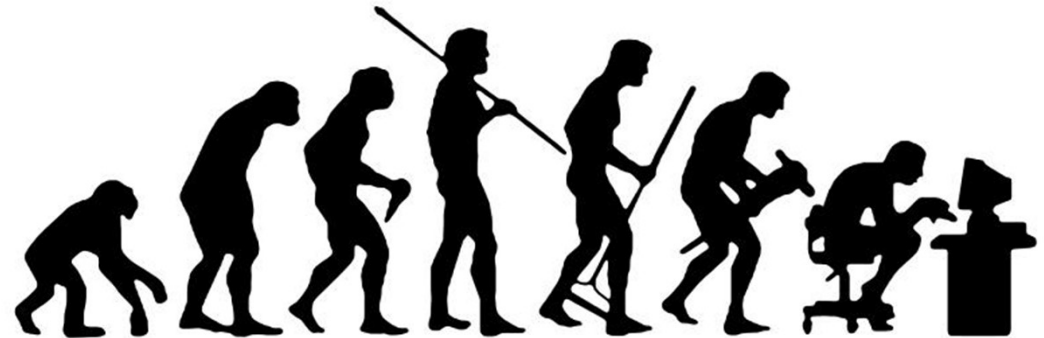
Now: another crossroads in
the electric age



Humanity faces multiple *crises* Human-made: Humanities' solutions?



Warming stripes (Ed Hawkins)
Annual global temperatures, 1850-2021
Blue = cooler than normal
Red = warmer than normal



*Digital
(R)evolution?*

Google

The image shows the word "Google" in a stylized, distressed font. The letters are rendered in a dark, textured blue-grey color, except for the second 'o' which is a solid red. The first 'o' and the final 'e' are also red. The letter 'l' is a solid green. The letters are surrounded by flames and smoke, suggesting a burning or distressed state. The background is white.



Visualization showing the number of trees needed to absorb the amount of CO₂ generated by the global visits to google.com every second in 2016!

www.janavirgin.com/CO2/DEFOOOOOOOOOOOOOOOOOOOOREST.html

Joanna Moll, 2016, janavirgin.com
DEFOOOOOOOOOOOOOOOOOOOOREST

Main takeaway

The 'Digital', and its associated technologies, is not one medium and does not carry one message, *but* there is a core to its long history: the binary, electric signal.

Underlying message: "The message of any medium is the change of scale or pace or pattern that is introduced into human affairs." (McLuhan 1964: 8)

Content Cue:

What has changed in your (thinking about your) digital practice? In what ways is this change part of overarching cultural and societal developments?

Or

What analog technologies and practices are part of/at the roots of (a specific form of) digital technology?